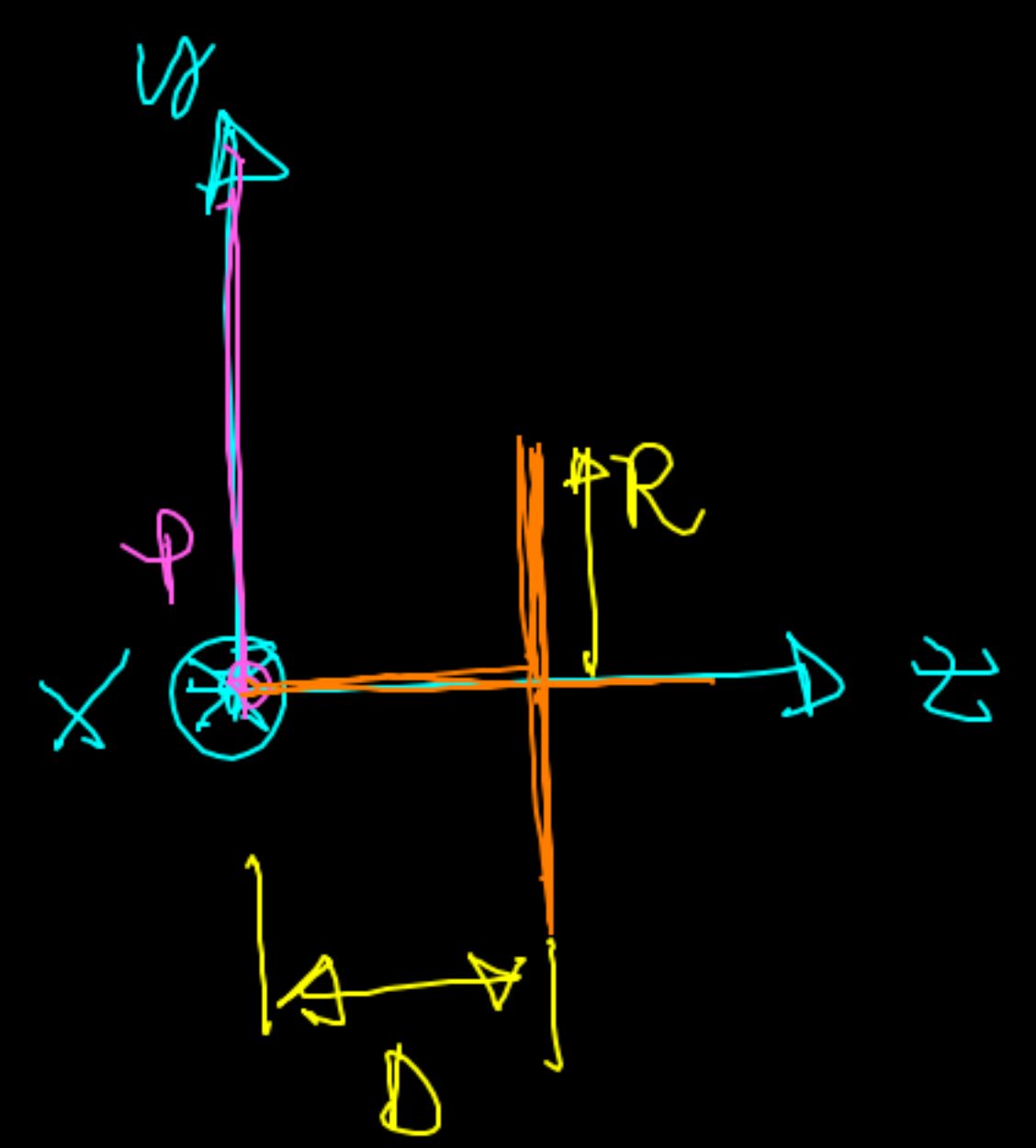
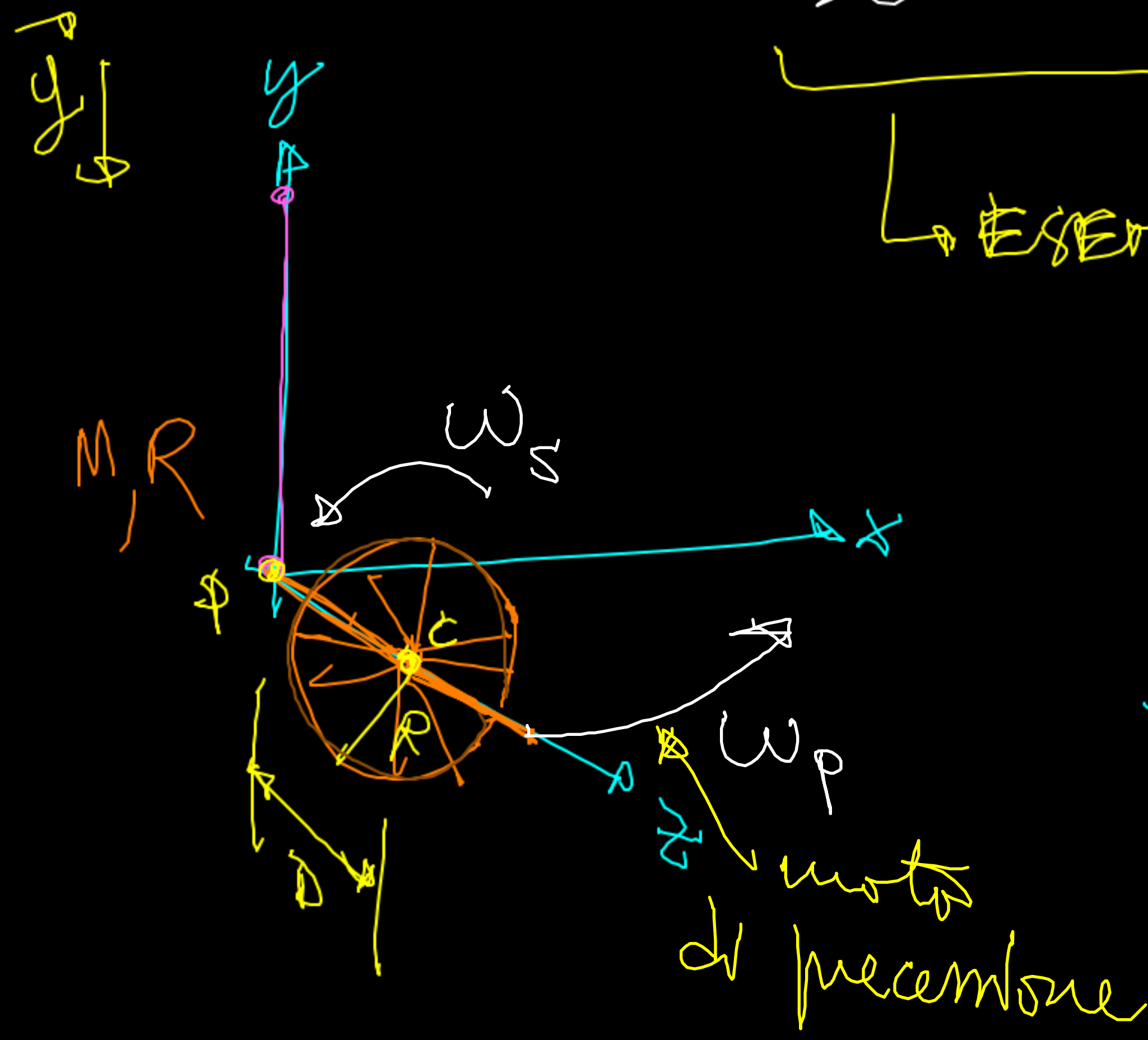


$$\sum \vec{\tau}_{o, \text{est}} = \frac{d\vec{L}_o}{dt}$$

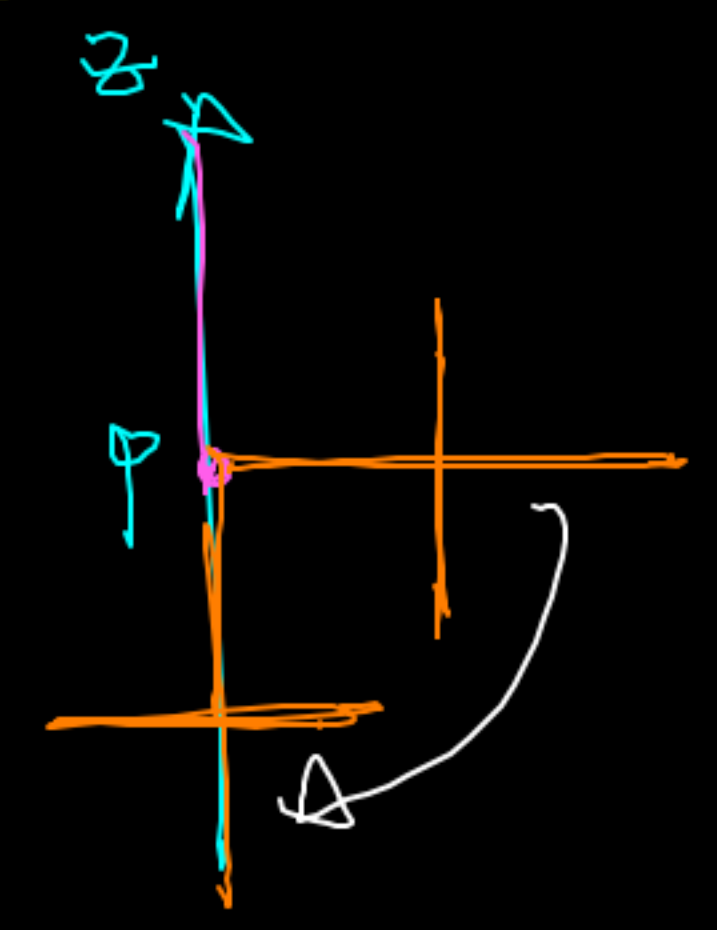
Se  $d\vec{L}_o \parallel \vec{L}_o$  cambia solo  $|\vec{L}_o|$

Se  $d\vec{L}_o \not\parallel \vec{L}_o \Rightarrow$  cambia la direzione di  $\vec{L}_o$

↳ **ESEMPIO: IL GIROSCOPIO**



Se no rot.







# MOTO ARMONICO

Legge oraria del moto armonico

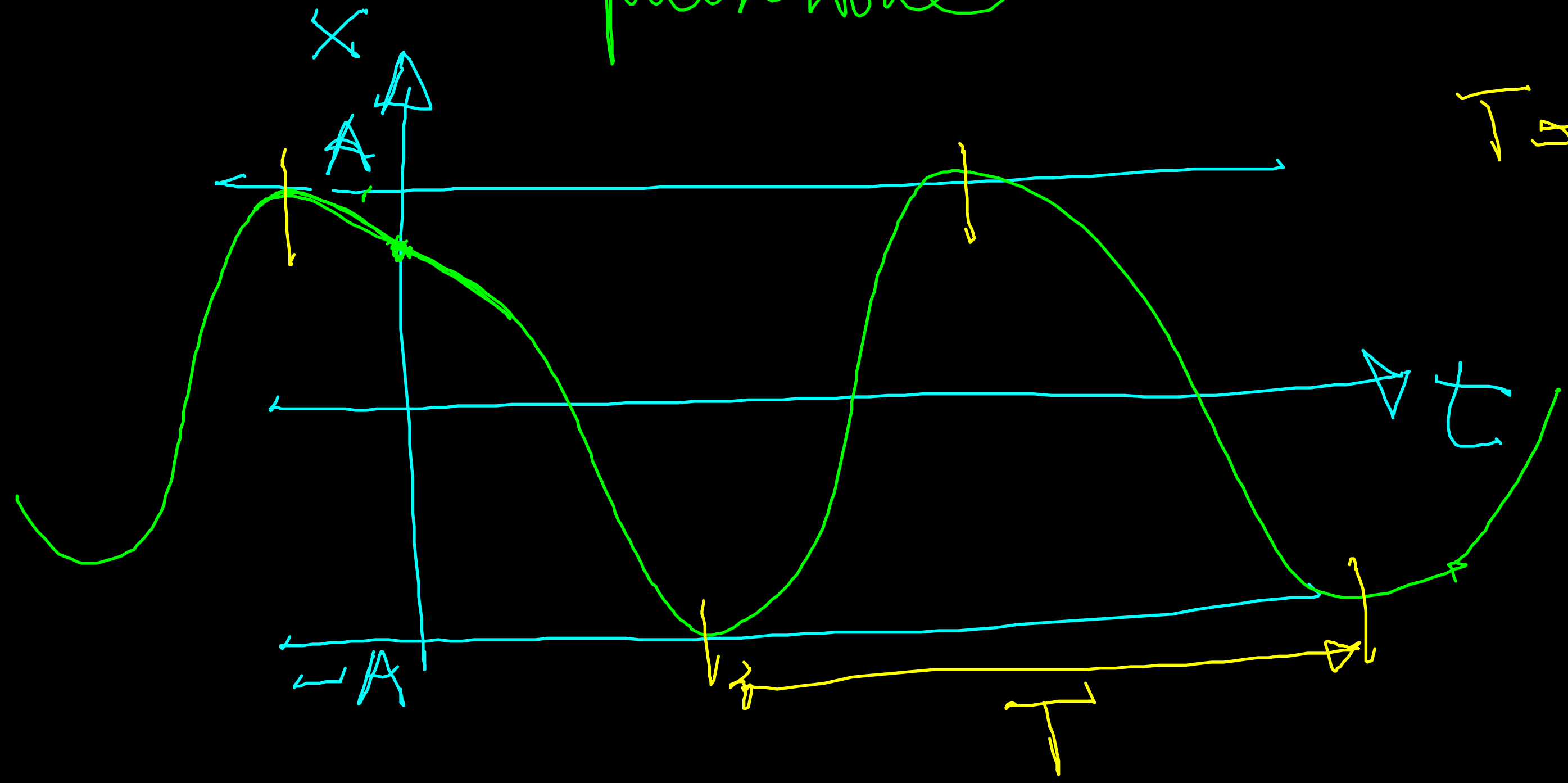
$$x(t) = A \cos(\omega t + \phi)$$

amplitude

pulazione

costante di fase

fase



T = period